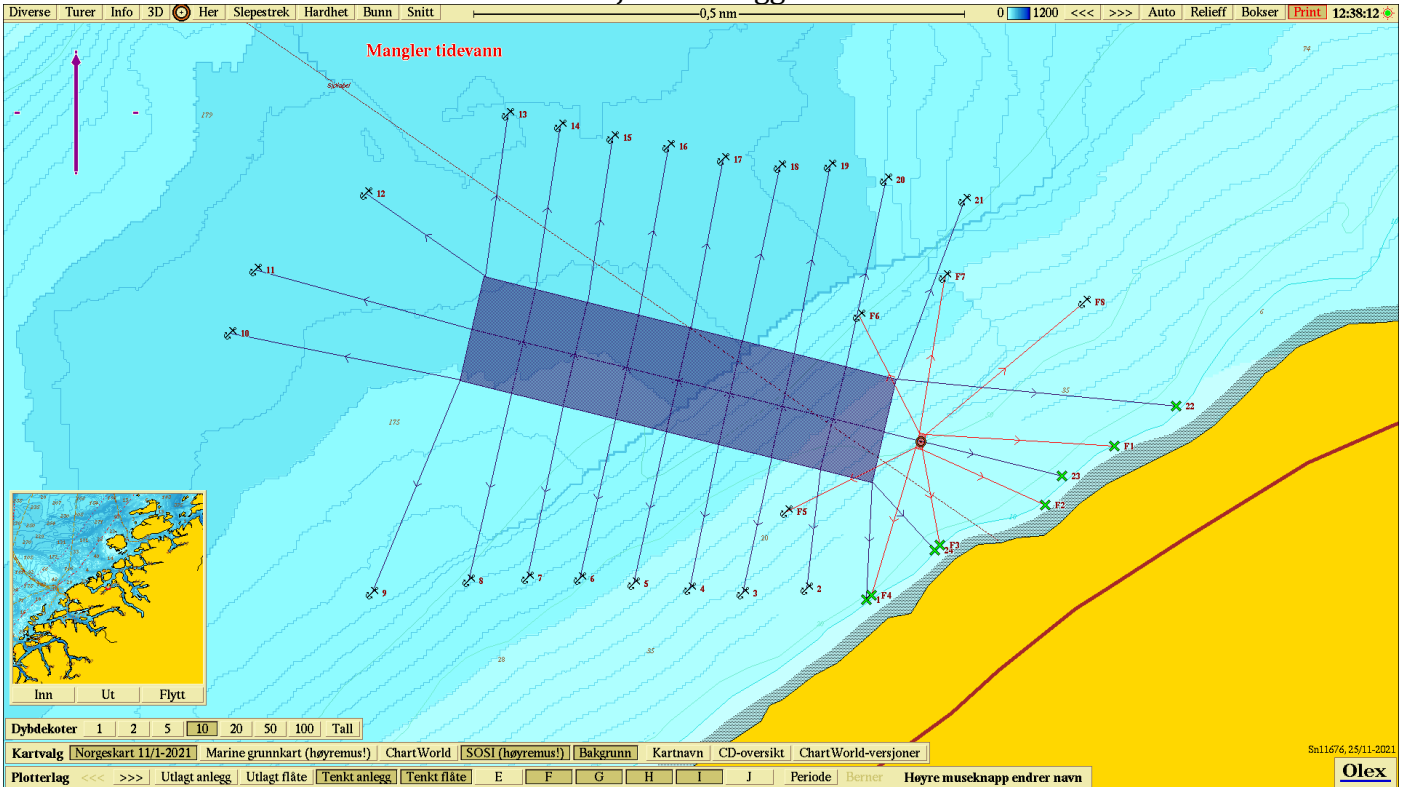


SELSTAD



Posisjoner anlegg Batn



Komponent	Posisjon N	Posisjon Ø	Komponent	Posisjon N	Posisjon Ø
Line 1	62°56.722	7°49.175	Hjørne NV	62°57.051	7°48.321
Line 2	62°56.733	7°49.041	Hjørne NØ	62°56.947	7°49.243
Line 3	62°56.729	7°48.898	Hjørne SØ	62°56.842	7°49.189
Line 4	62°56.734	7°48.780	Hjørne SV	62°56.945	7°48.267
Line 5	62°56.738	7°48.654			
Line 6	62°56.744	7°48.535	Senter Flåte	62°56.883	7°49.297
Line 7	62°56.744	7°48.418	FL1	62°56.878	7°49.730
Line 8	62°56.742	7°48.286	FL2	62°56.819	7°49.575
Line 9	62°56.729	7°48.070	FL3	62°56.778	7°49.339
Line 10	62°57.058	7°47.809	FL4	62°56.727	7°49.186
Line 11	62°56.993	7°47.752	FL5	62°56.812	7°48.996
Line 12	62°57.135	7°48.056	FL6	62°57.011	7°49.159
Line 13	62°57.216	7°48.374	FL7	62°57.051	7°49.351
Line 14	62°57.204	7°48.491	FL8	62°57.025	7°49.663
Line 15	62°57.192	7°48.608			
Line 16	62°57.183	7°48.733			
Line 17	62°57.170	7°48.854			
Line 18	62°57.163	7°48.982			
Line 19	62°57.163	7°49.095			
Line 20	62°57.149	7°49.219			
Line 21	62°57.128	7°49.394			
Line 22	62°56.919	7°49.868			
Line 23	62°56.848	7°49.613			
Line 24	62°56.772	7°49.329			

SELSTAD

